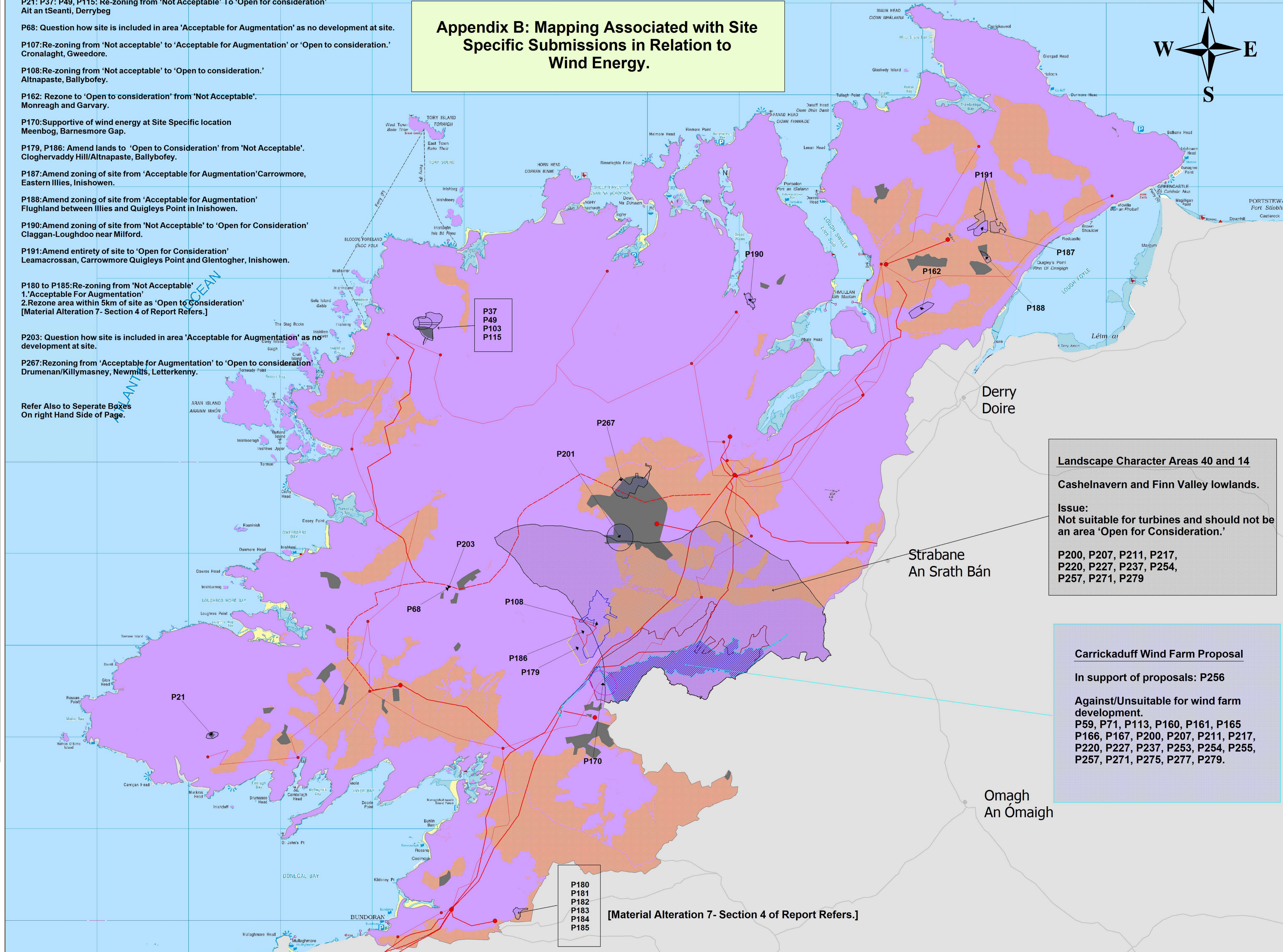
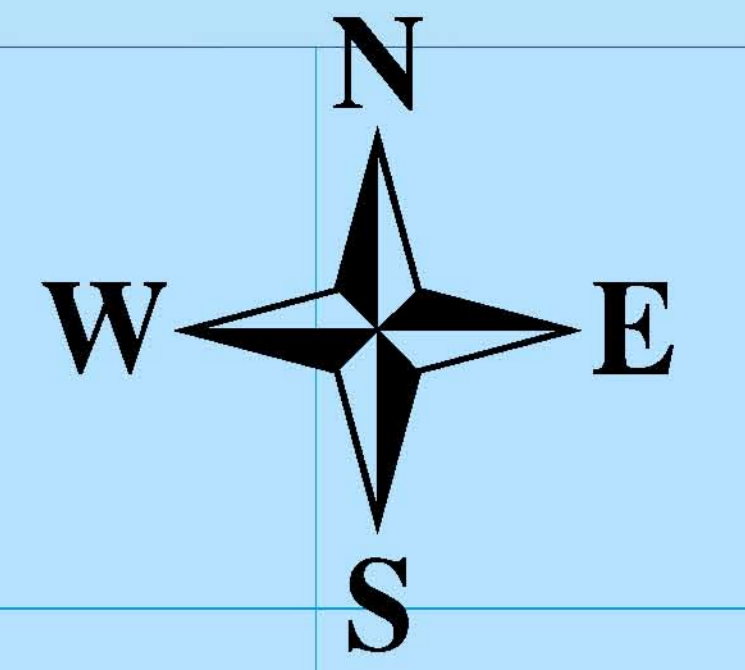


**Appendix B: Mapping Associated with Site Specific Submissions in Relation to Wind Energy.**



**P21: P37: P49, P115: Re-zoning from 'Not Acceptable' To 'Open for consideration'**  
Ait an tSeantú, Derrybeg

**P68:** Question how site is included in area 'Acceptable for Augmentation' as no development at site.

**P107:** Re-zoning from 'Not acceptable' to 'Acceptable for Augmentation' or 'Open to consideration.'  
Cronalaght, Gweedore.

**P108:** Re-zoning from 'Not acceptable' to 'Open to consideration.'  
Altnapaste, Ballybofey.

**P162:** Rezone to 'Open to consideration' from 'Not Acceptable'.  
Monreagh and Garvary.

**P170:** Supportive of wind energy at Site Specific location  
Meenbog, Barnesmore Gap.

**P179, P186:** Amend lands to 'Open to Consideration' from 'Not Acceptable'.  
Cloghervaddy Hill/Altnapaste, Ballybofey.

**P187:** Amend zoning of site from 'Acceptable for Augmentation' Carrowmore,  
Eastern Illies, Inishowen.

**P188:** Amend zoning of site from 'Acceptable for Augmentation'  
Flughland between Illies and Quigleys Point in Inishowen.

**P190:** Amend zoning of site from 'Not Acceptable' to 'Open for Consideration'  
Claggan-Loughdoo near Milford.

**P191:** Amend entirety of site to 'Open for Consideration'  
Leamacrossan, Carrowmore Quigleys Point and Glentogher, Inishowen.

**P180 to P185:** Re-zoning from 'Not Acceptable'  
1. 'Acceptable For Augmentation'  
2. Rezone area within 5km of site as 'Open to Consideration'  
[Material Alteration 7- Section 4 of Report Refers.]

**P203:** Question how site is included in area 'Acceptable for Augmentation' as no  
development at site.

**P267:** Rezoning from 'Acceptable for Augmentation' to 'Open to consideration'  
Drumenan/Killymasney, Newmills, Letterkenny.

Refer Also to Seperate Boxes  
On right Hand Side of Page.

**P37  
P49  
P103  
P115**

**P180  
P181  
P182  
P183  
P184  
P185**

[Material Alteration 7- Section 4 of Report Refers.]

**Landscape Character Areas 40 and 14**  
**Cashelnavern and Finn Valley lowlands.**  
**Issue:**  
Not suitable for turbines and should not be  
an area 'Open for Consideration.'  
**P200, P207, P211, P217,  
P220, P227, P237, P254,  
P257, P271, P279**

**Carrickaduff Wind Farm Proposal**  
**In support of proposals: P256**  
**Against/Unsuitable for wind farm  
development.**  
**P59, P71, P113, P160, P161, P165  
P166, P167, P200, P207, P211, P217,  
P220, P227, P237, P253, P254, P255,  
P257, P271, P275, P277, P279.**

**Legend**

- Not acceptable  
Ni ghlactar le
- Open to consideration  
Oscailte do bhreithniú
- Acceptable for augmentation  
Oscailte do bhreithniú
- Glacadh le mhéadaithe feabhsúcháin  
ar feirmeacha gasoilte reatha  
Inghlactha do mhéadaithe  
de feabhsúcháin ar ann cheana féin  
feirmeacha gasoilte.
- 38 Kv station  
Stáisiún 38Kv
- 38 Kv Line  
Line 38 Kv
- 110 Kv Station  
Stáisiún 110 Kv
- 110 Kv Line  
Line 110Kv
- 110 Kv Reinforcement Line  
- Operational from 2012
- Line Abandoned 110 Kv  
- 1st/2nd/3rd/4th/5th/6th/7th/8th/9th/10th/11th/12th/13th/14th/15th/16th/17th/18th/19th/20th/21st/22nd/23rd/24th/25th/26th/27th/28th/29th/30th/31st/32nd/33rd/34th/35th/36th/37th/38th/39th/40th/41st/42nd/43rd/44th/45th/46th/47th/48th/49th/50th/51st/52nd/53rd/54th/55th/56th/57th/58th/59th/60th/61st/62nd/63rd/64th/65th/66th/67th/68th/69th/70th/71st/72nd/73rd/74th/75th/76th/77th/78th/79th/80th/81st/82nd/83rd/84th/85th/86th/87th/88th/89th/90th/91st/92nd/93rd/94th/95th/96th/97th/98th/99th/100th
- Standard submission
- P113
- P256
- P200-P279
- P170
- P179
- P108
- P186

Ordnance Survey Ireland data reproduced under OSI Licence Number 2017/02/CCMA/ Donegal County Council. Unauthorised reproduction infringes Ordnance Survey Ireland and Government of Ireland copyright. Ordnance Survey Ireland, 2017. Donegal County Council, 2017.  
To be read in conjunction with relevant accompanying text contained in the front section of this appendix as well as other relevant objectives & policies of the CDP.  
Sonraí de chuid Shuirbhíreacht Ordáis Éireann ar a dtáirgeadh faoi Umhír Cheadúnais SOE 2017/02/CCMA Comhairle Contae Dhún na nGall. Níl dháantar é seo a dtáirgeadh gan údarás, sárúidh é do chéadair Shuirbhíreacht Ordáis Éireann agus Rialtas na hÉireann. Shuirbhíreacht Ordáis Éireann, 2017.  
Comhairle Contae Dhún na nGall, 2017.  
Láimhí gromhair leas an tseachtairtú tionscail a chun tosaigh. Níl dháantar é seo a dtáirgeadh gan údarás, sárúidh é do chéadair Shuirbhíreacht Ordáis Éireann agus Rialtas na hÉireann. Shuirbhíreacht Ordáis Éireann, 2017.  
Source - Donegal County Council  
Foinse - Comhairle Chontae Dhún na nGall